

Redwood County Energy Dialogue

Wind Energy Production Tax

New tax revenue from wind generation in Minnesota is derived from the state's wind energy production tax.

The production tax rate will vary by the capacity of the wind energy systems.

- Small scale wind energy systems with a capacity of 2 megawatts or less pay \$0.12 per megawatt hour.
- Wind energy systems with a capacity of more than 2 megawatts and up to 12 megawatts, and pay a rate of \$0.36 per megawatt hour.
- Systems with a capacity of more than 12 megawatts pay a rate of \$1.20 per megawatt hour.

Top ways counties are using their production tax

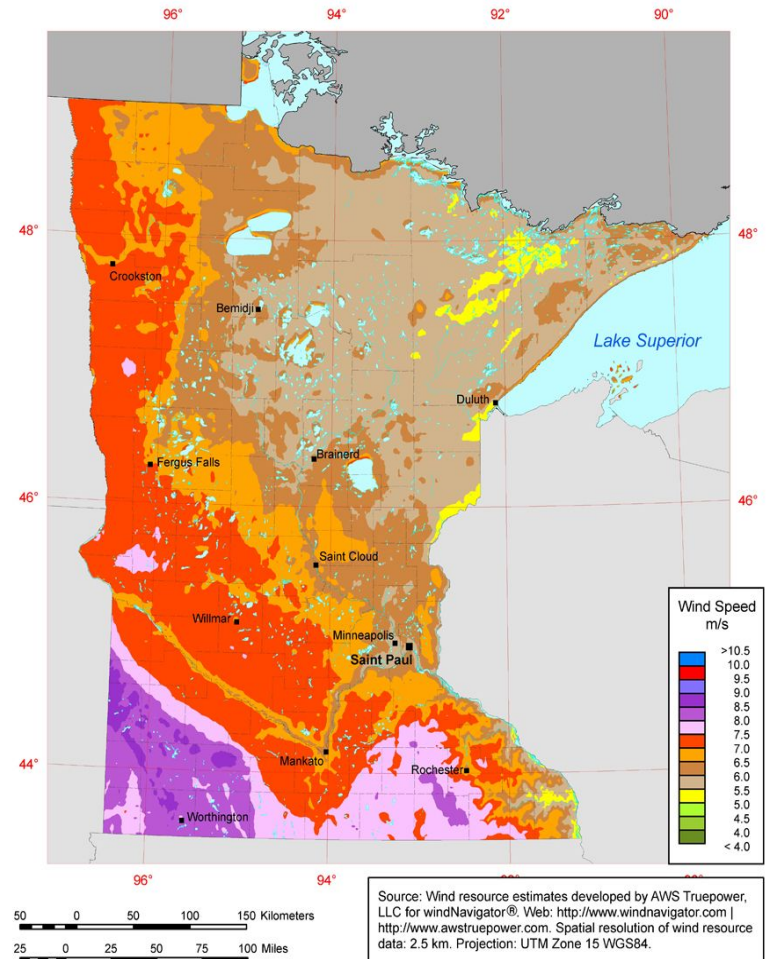
One of the questions from a survey conducted by the Southwest Regional Development Commission of 18 counties in Southwest MN asked, "in 2018, how do you use/plan to use your production tax?" Eleven of the 18 counties or 61% of the counties surveyed answered that question.

The 3 most common answers were:

- Capital improvements: 5 of the 11 counties
- Road repair: 3 of the 11 counties
- Tax relief : 5 of the 11 counties

Other planned uses for surveyed counties include building repair, broadband, and putting money in reserves.

Minnesota - Annual Average Wind Speed at 80 m





Redwood County Energy Dialogue Wind Energy Production Tax

Data sourced by the MN Dept. of Revenue Property Tax Division, April 2019

County	Tax Payable Year 2019	Cumulative Total (2004-19)
Becker	\$11,616	\$60,440
Chippewa	\$4,665	\$4,665
Clay	\$174,764	\$916,589
Cottonwood	\$712,866	\$3,751,993
Dodge	\$129,793	\$725,427
Faribault	\$143,936	\$932,118
Freeborn	\$609,078	\$5,176,709
Grant	\$65,274	\$602,479
Jackson	2,131,884	\$15,416,383
Lincoln	\$1,614,419	\$12,994,837
Lyon	\$68,724	\$495,848
Martin	\$330,976	\$4,182,972
McLeod	\$0	\$312
Meeker	\$117,898	\$1,077,150
Mower	\$2,141,038	\$19,358,955

County	Tax Payable Year 2019	Cumulative Total (2004-19)
Murray	\$1,236,112	\$16,115,779
Nobles	\$1,039,050	\$8,934,449
Otter Tail	\$0	\$0
Pipestone	\$535,727	\$8,015,473
Redwood	\$3,333	\$6,580
Rice	\$0	\$3,195
Rock	\$754,441	\$5,047,025
Sherburne	\$91	\$1,701
St. Louis	\$60,976	\$733,731
Stearns	\$345,669	\$754,663
Steele	\$138,814	\$1,073,361
Todd	\$1,655	\$16,376
Watonwan	\$32,095	\$386,832
Winona	\$2,348	\$28,762
TOTALS	\$12,407,239.40	\$106,814,805.38